



YACHTS (*private*) SAILING TO BERMUDA

BERMUDA TOURISM AUTHORITY
revised June 2013

BERMUDA
so much more®

GoToBermuda.com - 1.800.bermuda

TABLE OF CONTENTS

Yachts (Private) Sailing to Bermuda	3	Fly In, Sail Out	14
Safety Equipment	3	Firearms Act 1973	14
Voyage Plan	3	Misuse of Drugs Act 1972	15
Stores	3	Miscellaneous Information	15
Size of Vessel	4	Boat Yards, Haulage and Slipping Facilities	15
Location of Bermuda	4	Bunkering	15
Climate	4	Canvas Repairs	16
Tides	4	Currency	16
Hurricanes	4	Emergency Services in Port	16
Charts, Books and Supplies	4	Engine Repair	17
British Admiralty Hydrographic Office	4	Gas Refill	17
NIMA (U.S. National Imaging and Mapping Agency) ..	5	Marinas	17
The Binnacle Yachting Equipment and Accessories ...	5	Marine Accessories	17
Bluewater Books & Charts	5	Marine Departure Weather	17
Caribbean Inflatable Boats & Lifecrafts, Inc.	5	Marine Electrics	18
Landfall Navigation	5	Marine Electronics	18
New York Nautical Corporation	6	Mariner's Club	18
Pilothouse	6	Medical and Dental Facilities	18
Publications	6	Ocean Yacht Races to and from Bermuda	18
PW Marine	6	Rigging, Sail Makers and Repairs	19
Communications	6	Sewage and Trash Disposal	19
Radio Aids to Navigation	7	Ship's Chandlers	19
Approaches to Bermuda	8	Steel Fabrication	19
Pilotage and Entering Harbour	8	UHT or Long Life Milk and Soya Milk	20
Buoys	8	Visitors' Information	20
Arrival In Bermuda	9	Water	20
Health, Immigration and Customs Clearance	9	Yacht Agents	20
Passports	9	Yacht Mooring Rentals	20
Proff of Citizenship and Identification	9	Approach Lights to Bermuda (from seaward)	21
Visas	10	Lighted Buoys, Beacons, Ship's Channels	23
Visiting Yachts and Their Crews	11	Shore Lights, Beacons	23
Revenue Act (Simplified Entry Outwards) Notice 2012 ..	11	Town Cut, St. George's	23
Shipboard Pets	12	St. Catherine's Point to Spanish Point	24
Procedure for Obtaining an Import Permit	12	Great Sound, Morgan's Point, Freeport	24
Extended Stay and Living Aboard	13	Hamilton	24
Anchorage and Berthing Facilities	13	Granaway Deep	25
Short-term Dinghy Docking in Hamilton	14	Western (Hogfish) Channel	25

A voyage under sail to Bermuda can be a rewarding and relaxing experience—provided that you plan your voyage carefully and check and prepare your vessel adequately. This Information Sheet should be used in addition to all the other traditional reference material available.

It is especially important to keep in mind the vulnerability of electronic navigation equipment in the marine environment and for this reason have at least one crew member aboard who is capable of navigating using paper charts and have back-up GPS capability. Backup communication and navigation equipment, as well as contingency planning for an emergency, will all help to ensure a safe arrival in Bermuda.

SAFETY EQUIPMENT

Contact the nearest Coast Guard or Coast Guard Auxiliary office early in the planning stage to obtain a full list of recommended safety equipment. All ocean-going yachts should have at least:

- A 406 MHz Emergency Position Indicating Radio Beacon (EPIRB);
- A Digital Selective Calling DSC VHF radio-telephone transceiver capable of 25 watts power output;
- A Single Side Band radio-telephone transceiver operating on medium and high frequencies
- A satellite telephone;
- An ocean-ready life raft designed to hold the total number of crew aboard your vessel and a survival or 'panic' bag containing pre-packed rations and other essential items;
- A radar reflector;
- Parachute rockets, smoke flares and dye markers;
- Some form of auxiliary power;
- Sufficient battery power to keep navigation and communication systems operating for several days in the event of engine or generator failure;
- AIS Transponder.

VOYAGE PLAN

It is advisable to file details of your voyage, vessel description, safety equipment and crew information with RCC Bermuda/Bermuda Radio prior to commencing your voyage to Bermuda. Check their website, www.rccbermuda.bm, for a standard pre-arrival form that you can complete online, otherwise simply give them a call, tel (441) 297-1010, for more information about this initiative. Your vessel and crew data is captured in a database for easy retrieval in the event that you unexpectedly need help from Search and Rescue agencies. If you have not pre-filed, Bermuda Radio will request this same information when you initially make contact on the VHF radio as you approach Bermuda. So, why not file in advance and enjoy all the safety and time saving benefits from the minute you put to sea and head towards the Island?

http://www.marops.bm/of_visitingyacht.aspx

STORES

To calculate your minimum requirements of consumable stores, estimate the number of days required to make a normal passage, double it and throw in a few extra days for good measure. It is reasonable, for example, for a 40-foot yacht to take 5 ½ days to get from New York to Bermuda. In that case, stores and water should be taken aboard for a 14-day journey.

SIZE OF VESSEL

All types of small craft have successfully completed passages in all seasons, but the elements of risk and discomfort increase rapidly as the length of a vessel falls below 30 feet. However, a well-found vessel of 35 feet overall, carrying an experienced crew of four or five people, should be adequate for a normal ocean passage.

LOCATION OF BERMUDA



Five Fathom Hole, at the approach to Bermuda's two main entrances, Town Cut Channel and the Narrows Channel, lies 667 nautical miles to the southeast of New York in the

Atlantic Ocean at 32° 23' north latitude and 64° 38' west longitude. The Island is some 640 nautical miles from Norfolk, Virginia and 687 nautical miles from Boston.

CLIMATE

Bermuda is not in a Trade Wind zone. The general northeasterly flow of weather systems over the Eastern Seaboard of the United States continues over Bermuda. During the summer months, however, a high-pressure cell located between the Azores and Bermuda becomes the predominant meteorological factor affecting Bermuda weather. The so-called Bermuda-Azores High usually produces wind speeds averaging 15 knots. Although the centre of the system is near the Azores, the highest average pressures are recorded near Bermuda. Another big influence on Bermuda's weather is the Gulf Stream. Its northward flow between the United States and Bermuda warms the Island's waters and stabilises the climate. Temperatures vary little more than 20°F throughout the year, dropping to an average of 62°F in February, the coolest month, and rising to an average of 82°F in August. The cooler season from December through March is mild, with average daytime temperatures in the 60s. The average annual rainfall of 58 inches is well distributed throughout the year. The wettest month, on average, is October, when approximately six inches normally falls; the driest is April with a fall of approximately three inches.

TIDES

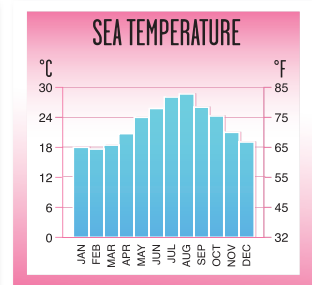
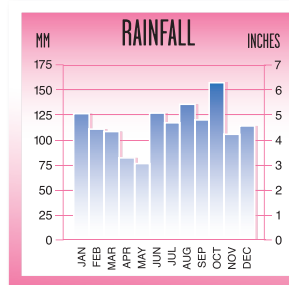
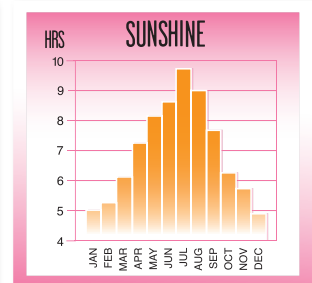
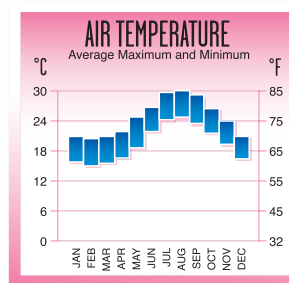
The tide's average rise and fall varies between three and four feet.

HURRICANES

Bermuda does lie in the track of those tropical revolving storms known as hurricanes, which are usually born in the southeastern waters of the North Atlantic. The hurricane season is defined as occurring between 1st June and 30th November. The normal pattern is for a hurricane to move west until it reaches the Caribbean or the southeast coast of the United States before changing course to the north, then the northeast, roughly following the direction of the Gulf Stream. Most hurricanes, therefore, bypass Bermuda to the west. The period of greatest frequency for these dangerous and highly unpredictable storms is between 15th August and 15th October—an average of 40% of the hurricanes passing Bermuda are recorded in September. The passage of hurricanes directly over Bermuda is rare.

CHARTS, BOOKS AND SUPPLIES

The following is a list of charts available for the Bermuda Islands. All vessels should have at least those charts detailing the offshore beacons and reef areas and the eastern approaches, including St. George's Harbour (your port of entry). These chart numbers are displayed in bold typeface. Additional large-scale charts of inshore waters can then be selected depending on interest.



Weather Observations Average conditions. Source: Bermuda Weather Service. For climatological information visit www.weather.bm.

British Admiralty Hydrographic Office

All British Admiralty Charts for Bermuda have been revised and aligned to WGS84 Datum (meaning satellite derived positions can be plotted directly on these charts) and all depths are now in meters.

Chart No.	Title of Chart Area	Scale
332	Grassy Bay & Great Sound including Little Sound (and Ireland Island, North & South Basins)	1 : 12,500
334	North Atlantic Ocean - Bermuda	1 : 75,000
360	North Atlantic Ocean - Approaches to Bermuda	1 : 300,000
867	North and South Channels to the Great Sound	1 : 17,500
868	Eastern & Western Approaches to the Narrows including Murray's Anchorage	1 : 17,500
1073	Dundonald Channel to Hamilton Harbour	1 : 6,000
1315	Five Fathom Hole, the Narrows and St. George's Harbour Imray lolaire:	1 : 7,500
E5	Bermuda Islands: Plans & Approaches Varied	

NIMA (U.S. National Imaging and Mapping Agency)

Chart No.	Title of Chart Area	Scale
26340	Approaches to Bermuda Islands	1 : 200,000
26341	Bermuda Islands	1 : 50,000
26342	The Narrows to Grassy Bay	1 : 17,500
26343	The Narrows and St. George's Harbour	1 : 5,000
26344	Great Sound including Dockyard North & South Basins	1 : 10,000
26345	Hamilton Harbour	1 : 6,050
5161	Southeast Coast of North America/Loran C. Plotting chart - Newport to Bermuda.	

The Binnacle Yachting Equipment and Accessories

15 Purcell's Cove Road
Halifax, Nova Scotia, Canada B3N 1R2
t (902) 423-6464
(800) 665-6464
f (902) 479-1518
e store@binnacle.com
w www.binnacle.com

Bluewater Books & Charts

1811 Cordova Road
Fort Lauderdale, FL 33316, USA
t (954) 763-6533
(800) 942-2583
f (954) 522-2278
e help@bluewaterweb.com
w www.bluewaterweb.com

Caribbean Inflatable Boats & Lifecrafts, Inc.

6200 Estate Frydenhoj 56
Suite 2
St. Thomas, Virgin Islands 00802-1405
t (340) 775-6159
f (340) 775-2014
e janis@caribbeaninflatable.com
w www.caribbeaninflatable.com

Landfall Navigation

151 Harvard Avenue
Stamford, CT 06902, USA
t (203) 487-0775
(800) 941-2219
f (203) 487-0776
e Info@LandfallNavigation.com
w www.LandfallNavigation.com



New York Nautical Corporation

158 Duane Street
New York, NY 10013, USA

t (212) 962-4522

(800) 707-3885

f (212) 406-8420

e info@newyorknautical.com

w www.newyorknautical.com

(British Admiralty charts and publications also stocked)

**Publications**

In Bermuda, the 'Reed's Caribbean Almanac' and the 'Reed's East Coast' publications, plus the British Admiralty Charts and catalogue of B.A. Charts are all available from:

PW Marine

110 Woodlands Road
Hamilton HM 08, Bermuda

t (441) 295-3232

f (441) 292-5092

e enquiries@pwmarine.bm

w www.waterfrontbermuda.com or www.pwmarine.bm

COMMUNICATIONS

The Bermuda Islands have one marine radio communications facility, Bermuda Radio, call sign ZBR, operated by the Bermuda Government. Bermuda Radio is the Rescue Co-ordination Centre for the Bermuda area maintaining a continuous listening watch on the international distress frequencies of 2182 kHz, 4125 kHz, Ch 16 VHF and Digital Selective Call frequencies 2187.5 kHz and Ch 70 VHF (MMSI number 003100001). They are in 24-hour contact with Coast Guards and other air-sea rescue centres in North America, Europe and the Caribbean.

t (441) 297- 1010,

f (441) 297-1530,

e operations@rccbermuda.bm
or dutyofficer@marops.bm,

Pilothouse

1600 S. Delaware Avenue
Philadelphia, PA 19148, USA

t (215) 336-6414

(800) 327-7992

f (888) 210-9654

e patrick.kean@comcast.net

w www.pilothousecharts.com



or INMARSAT C AOR (East) 581 431010110 or INMARSAT C AOR (West) 584 431010120. For further information visit their website at www.rccbermuda.bm.

Bermuda Radio broadcasts warnings on matters of navigational safety as well as weather information by voice and Navtex to an internationally published schedule.

Radiotelephony (voice) broadcasts are preceded by an initial announcement on 2182 kHz and Ch 16 VHF. Full information then follows on 2582 kHz and Ch 27 VHF. Broadcast times are 0035 GMT, 0435 GMT, 0835 GMT, 1235 GMT, 1635 GMT and 2035 GMT.

Continuous local weather information is available on VHF Weather Channel 2 (WX 02), frequency 162.4 MHz.

Navtex broadcasts can be received on 518 kHz by selecting station character 'B'. Such broadcasts contain Notices to Mariners and the latest Western North Atlantic, South-West North Atlantic and local weather forecasts available. Broadcast times are 0010 GMT, 0410 GMT, 0810 GMT, 1210 GMT, 1610 GMT and 2010 GMT.

Distress, Urgency and Safety traffic is sent on 2182 kHz, Ch 16 VHF and Navtex 518 kHz immediately upon receipt and then repeated at the above times for radiotelephony and Navtex respectively. Weather forecasts and other information are provided upon request. All services from this station are free of charge.

The following is a list of MF/HF SSB frequencies typically used by Bermuda Radio for routine communications a continuous watch is maintained on 2182 kHz and 4125kHz:

Coast station transmits	Ship station transmits	
Distress / Call & Reply	4125 kHz	4125 kHz
Distress / Call & Reply	2182 kHz	2182 kHz
MF working frequencies	2582 kHz	2049 kHz
ITU Channel 410	4384 kHz	4092 kHz
ITU Channel 603	6507 kHz	6206 kHz
ITU Channel 817	8767 kHz	8243 kHz
ITU Channel 1220	13134 kHz	12287 kHz
ITU Channel 1618	17293 kHz	16411 kHz

The following is a list of required VHF channels for radio communication in Bermuda waters:

Channel 16	Distress / Call & Reply
Channel 27	Bermuda Radio - Duplex working channel
Channel 68	Bermuda Radio - Simplex working channel

The following VHF channels are not to be used for inter-ship communication:

Channel 12	Used by ships with pilot aboard
Channel 10	Used for port operations with tugs and tenders
Channel 22	Used by the Bermuda Police Marine Section
Channel 70	Used exclusively for Digital Selective Calling in accordance with Global Maritime Distress and Safety System requirements.

There is no facility for VHF radio-telephone link calls from Bermuda.

RADIO AIDS TO NAVIGATION

A non-directional radio beacon is used for the transmission of differential GPS corrections. The position, transmitter frequency and emission characteristics are as follows:

St. David's DGPS reference station (I.D. No. 0950)

Frequency	323 kHz
Position	32° 22.0'N 64° 38.9'W
Range	150 miles
Operation	Continuous
Baud	Rate 100 bps

APPROACHES TO BERMUDA

When approaching Bermuda from the north it must be remembered that reefs extend up to 10 miles from the Island in this direction—consequently it is advisable to keep well to the east and approach St. David's Head on a course of 226 degrees true. When approaching from the south, St. David's Head should be safely passed at a distance of one mile or greater and kept at a bearing of 225 degrees true until St. Catherine's Point bears 290 degrees true.

In poor visibility, or when a vessel is having navigation difficulties or problems manoeuvring, the safest direction to approach the Island from is the southeast. It should also be remembered that the 100-fathom line is only 1 to 1.5 miles from shore.

During their approach, vessels should maintain radio contact with Bermuda Radio, whose staff will normally be able to assist if necessary.

If in doubt about approaching Bermuda at night and entering the harbour, vessels are advised to lie offshore until daybreak, or anchor in Five Fathom Hole (32° 23'N 64° 37'W).

PILOTAGE AND ENTERING HARBOUR

Use of the Government Pilot Service is compulsory for commercial vessels, but not for private craft. This service is available during daylight hours only (sunrise to sunset) except in emergencies. Pilotage charges can be obtained from the department of Marine & Ports Services, Tel (441) 295-6575.

The approach to St. George's Harbour through Town Cut Channel is not difficult during the day or night provided that a good lookout is kept, large-scale charts are used and a means of accurately determining the vessel's position is employed. The latest Notices to Mariners and Local Navigation Warnings for the area should also be noted at the scheduled broadcast times prior to beginning an approach. If you and your crew are tired, or for any reason are not confident about making a safe landfall during the hours of darkness, it is advisable to remain offshore until daybreak.

The channels beyond St. George's Harbour are well marked

and navigation in local waters should present little difficulty in clear weather, with up-to-date large-scale charts. Visiting vessels are advised, however, not to proceed beyond St. George's Harbour during the hours of darkness.

BUOYS

Bermuda's channels are marked by buoys and beacons in accordance with the I.A.L.A. region B marking system.

Port Hand: Green can buoys are numbered evenly and, when lit, display a flashing green light.

Starboard Hand: Red conical buoys, odd numbers. When lit, flashing red light.

Detailed information on approaches, pilotage, channels, etc., may be found in the following publications:

- 'West Indies Pilot', U.S. Sailing Directions, Pub. 147, published in the U.S.;
- 'West Indies Pilot', Vol. I, Sailing Directions for Bermuda, published in the United Kingdom;
- 'Reed's Caribbean Almanac', published in the U.S.



ARRIVAL IN BERMUDA

All yachts calling at Bermuda must contact Bermuda Radio prior to arrival. A VHF radio call should be attempted at 30 miles from the Island giving an ETA and details of any special requirements. Bermuda Radio will ask for a description of your vessel, as well as details of certain safety equipment carried aboard. Assistance with entering the harbour and obtaining Customs, Immigration and Health clearance is also provided. Details of any relevant shipping movements or other safety information will also be passed on.



All vessels should enter St. George's Harbour flying code flag 'Q' (the yellow quarantine flag) from a conspicuous position in the rigging and proceed to the H.M. Customs dock, which is located on the northeast corner of Ordnance Island. This flag signal should remain hoisted until clearance has been granted by H.M. Customs. Vessels will require clearance from H.M. Customs and the Department of Immigration immediately upon arrival. The H.M. Customs office is open 24 hours for arrivals.

Should you have any questions for H.M. Customs at any time during your stay, they may be contacted directly on VHF Channel 16 or via Tel (441) 297-1226. A call to Bermuda Radio on departure is also requested in the interests of safety.

HEALTH, IMMIGRATION AND CUSTOMS CLEARANCE

All visiting yachts are required to obtain Health, Immigration and Customs and clearance in the port of St. George before proceeding elsewhere in Bermuda. The Yacht Reporting facility in St. George's is the only clearance port for arriving and departing yachts in Bermuda. This clearance facility is located at the eastern end of Ordnance Island.

Yachts arriving in Bermuda from overseas ports are normally cleared with a minimum of formality. Upon approach to Bermuda, visiting yachtsmen are required to contact Bermuda Radio, on VHF channel 16 or 27. Vessel details will be required for search and rescue purposes. Once Bermuda Radio has been contacted, they will guide vessels into St. George's Harbour and direct them for Customs clearance berthing. The Customs boarding officer, who normally carries out clearance formalities for all three departments, will greet all arriving yachts and process all arriving crew and passengers at the facility. An arrival tax of US\$35 will be levied for each person on board the visiting yacht. This fee is to defray, in part, the costs of providing the Customs clearance facility, the Bermuda Marine Rescue Services, the Search and Rescue Co-ordination Centre at Bermuda Radio and local aids to navigation. The Customs boarding officer will collect the fee as part of the clearance procedure. A Bermuda Government official receipt must be issued. Children under the age of 2 years are exempt.

Passports

A Passport is the document for entry into Bermuda and is required of all visitors from countries that require a Passport for re-entry purposes or for entry through another country to which the passenger has right of entry.



Proof of Citizenship and Identification

All travellers must carry with them proof of citizenship and personal identification (including government issued photo ID) relevant to a return to their own country or for re-entry through another foreign country, as required by Bermuda Immigration authorities. This applies to adults and children, whether travelling alone or with their parents.

Visitors from the United States of America must present a valid, machine-readable US Passport.

Visitors from Canada must present a valid, machine-readable Canadian Passport.

Visitors from the United Kingdom and Western Europe must present a valid, machine-readable Passport of their country.

NOTE:

- Foreign citizens not in possession of a Passport may be refused entry into Bermuda.
- Driver's licence is not acceptable as proof of citizenship.
- Neither Bermuda nor U.S. Immigration authorities accept a notarized copy of a hospital birth certificate, or similar non-governmental document as proof of citizenship.
- Married women whose identification documents are in their maiden name, but who are travelling under their married name, should also carry their marriage certificate, or a certified copy, as further proof of identity.

All bona fide visitors are allowed to remain in Bermuda for an initial period of 90 days. An application to extend the length of stay for a yachtsman must be made in person, by appointment, at Immigration Headquarters in Hamilton, tel (441) 295-5151.

Visas

Nationals of the following countries require Bermuda Entry Visas: Afghanistan, Albania, Algeria, Angola, Armenia, Azerbaijan, Bahrain, Bangladesh, Belarus, Bolivia, Bosnia-Herzegovina, Bulgaria, Burundi, Cambodia, Cameroon, China (Peoples' Republic of), Columbia, Congo (Brazaville), Congo (Kinsasha), Cote d'Ivoire, Croatia, Cuba, Cyprus (northern part), Djibouti, Dominican Republic, Ecuador, Egypt, Eritrea, Ethiopia, Gambia, Georgia, Ghana, Guinea (Republic of), Guinea-Bissau, Haiti, India, Iran, Iraq, Jamaica, Jordan, Kazakhstan, Kenya, Korea (Democratic People's Republic of), Kosovo, Kuwait, Kyrgyzstan, Lebanon, Lesotho, Liberia, Libya, Macedonia (Former Yugoslav Republic of Macedonia), Malawi, Moldova (Republic of), Mongolia, Montenegro, Morocco, Myanmar (Burma), Nepal, Nigeria, Oman, Pakistan, Palestinian Authorities, Panama, Philippines, Qatar, Romania, Russian Federation, Rwanda, Saudi Arabia, Senegal, Serbia (Republic of), Sierra Leone, Somalia, South Africa, Soviet Union (former), Sri Lanka, Sudan, Swaziland, Syria, Tajikistan, Tanzania, Tunisia, Turkey, Turkish Republic of N. Cyprus, Turkmenistan, Uganda, Ukraine, United Arab Emirates, Uzbekistan, Venezuela, Vietnam, Yemen, Yugoslavia (former Soc. Fed. Rep. of), Zimbabwe.

At 1st May, 2012, an automatic waiver of the requirement for a Bermuda Entry Visa was implemented for tourist and business visitors from Brazil, Russia, India and China, only. The sole condition for this waiver, is that the visitor must have a multi re-entry Visa for either the United States, Canada or the United Kingdom.

The following Passport holders do not require Visas for Bermuda:

- Holders of Hong Kong Special Administrative Region

Passports or British National (Overseas) Passports; and,

- Holders of Cypriot (Republic of Cyprus) Passports.

NOTE:

Exceptions to the Visa rules above will be made for visitors to Bermuda having a valid Passport and proof of right of abode in the United States, Canada or the United Kingdom. This means: for US residents, a Permanent Resident Card is required; Canada residents, a Permanent Resident Card is required; UK residents must be able to show that no limit has been placed on his or her stay in the United Kingdom.

Those who require Visas to enter other countries on departure from Bermuda must have those Visas prior to arrival in Bermuda.

Visas to enter Bermuda may be obtained from the Visa Section of a British Embassy, the British High Commission or the British Consulate in the national's country. For more information, visit www.immigration.gov.bm (search Passport and Visas). Or, you may apply for a Visa waiver prior to your arrival in Bermuda via the Compliance Section, Bermuda Department of Immigration by including a copy of your Passport data to slambert@gov.bm or knswan@gov.bm. A fee of US \$200 applies if the waiver is applied for after arrival into Bermuda.

Visiting Yachts and Their Crews

H.M. Customs may give permission for a vessel to remain in Bermuda waters for an extended period or during the temporary absence of the responsible individual. In either case, application in writing to the Collector of Customs to sanction the arrangement must be made and approved prior to the effective date. Yachtsmen are advised not to confuse this permission with the separate and specific permission required, from the Department of Immigration, by each individual to remain in Bermuda beyond the standard 90 days.

During the Hurricane Season, from 1st June to 30th November, visiting yachtsmen may be given permission to stay in Bermuda for up to five months so as to provide safe haven.

A yachtsman wishing to avail himself or herself of this

privilege must submit proof to the Department of Immigration:

- of citizenship
- of the means to repatriate himself or herself by air, should the need arise
- of health insurance
- in writing, that he or she will not seek or take up employment in Bermuda.



Revenue Act (Simplified Entry Outwards) Notice 2012

New Customs requirements relating to the rendezvous by local vessels with vessels on international voyages (not yet cleared into Bermuda) have been introduced by HM Customs under the cooperative oversight of the Maritime Operations Centre / Bermuda Radio.

The Collector of Customs, in exercise of the power conferred by section 7(7) of the Revenue Act 1898, makes the following Notice [in effect since 1st June 2012]:

Citation

- 1 This Notice may be cited as the Revenue (Simplified Entry Outwards) Notice 2012.

Particulars of simplified entry outwards

2. Every simplified entry outwards shall consist of:-

- (a) the name of the master;
- (b) the name of every member of the crew;
- (c) the name and registration number of the departing ship;
- (d) the name and registration number of any ship with which

- the master of the departing ship intends to rendezvous;
- (e) the purpose of any rendezvous; and
- (f) the intended place and estimated time of any rendezvous.

Transmission of simplified entry outwards

Simplified entry outwards shall be made by voice transmission using the following means of communication:

- (a) telephone
 - (i) by calling the Bermuda Maritime Operations Centre (Bermuda Radio) on telephone (441) 297-1010; and
 - (ii) by sending the simplified entry outwards prescribed by paragraph 2 of this Notice; or
- (b) radiotelephone
 - (i) by calling Bermuda Radio on marine VHF channels 16 or 27; and
 - (ii) by sending the simplified entry outwards prescribed by paragraph 2 of this Notice on marine VHF channels 16 or 27.

SHIPBOARD PETS



All animals (and we include birds and fish in our definition of that word) arriving in Bermuda are required to be accompanied by health documents as well as an Import Permit issued in advance by the Bermuda Department of Environmental Protection. Animals arriving without proper documentation will be refused entry and will be required to be kept on board the vessel, and the vessel kept at anchor, as there are no quarantine facilities in Bermuda.

Procedure for Obtaining an Import Permit

The importer should contact the Bermuda Department of Environmental Protection, or visit their website,

www.animals.gov.bm, as far in advance as possible to learn of the import requirements for his or her pet. However, the actual application for an Import Permit and the supporting health documents should be submitted to the Bermuda Department of Environmental Protection no more than 10 days prior to arrival into the Island.

Application forms (but not Import Permits) are downloadable from the websites of the Bermuda Department of Environmental Protection <www.animals.gov.bm> and the Bermuda Tourism Authority <GoToBermuda.com>. The application must specify the particulars of the animal involved, the origin of the shipment and show fulfilment of all import requirements. The application and supporting documentation should be sent to the Department of Environmental Protection via fax, email or courier.

Once satisfied with the information provided, an Import Permit will be faxed or emailed to you in your home country. The usual response time from the Department is one or two working days. Note that the Department of Environmental Protection is closed on weekends and public holidays.

A printed copy of the Import Permit that had been faxed or emailed to you, together with the originals of the supporting health documents must accompany the animal and be available for inspection upon arrival. Yachts with animals arriving without proper documentation will be made to anchor in deep water. The animals will be restricted to the interior of the vessel and will not be permitted to come onto shore at all pending a final decision from the Department of Environmental Protection on the animal's eligibility to enter Bermuda. Additionally, any arriving animal is subjected to protective measures ordered by the Department of Environmental Protection or H.M. Customs Bermuda.

Enquiries and import applications should be forwarded to:

Director, Department of Environmental Protection
Mailing Address: P.O. Box HM 834, Hamilton HM CX, Bermuda
Street Address: Botanical Gardens, 169 South Road, Paget

DV 04, Bermuda

t (441) 236-4201

f (441) 232-0046

e animals@gov.bm

w www.animals.gov.bm

All animals should be examined shortly before travel to ensure that they are fit for travel, consideration being given to the length of trip and the environmental conditions that may be encountered.

EXTENDED STAY AND LIVING ABOARD

Visiting yachtsmen wishing to stay in Bermuda for an



extended period while living on their yachts should note the following:

1. While the Department of Immigration permits yachtsmen to live aboard their yachts while in Bermuda, they are treated in the same manner as other visitors (refer to 'Health, Immigration and Customs Clearance' page 9). The Department of Marine & Ports Services asks to be advised when yachtsmen plan to live on their yacht for extended periods.
2. All yachtsmen must comply with Bermuda Health Regulations so as not to create any kind of public health nuisance. Particular care should be taken with the proper disposal of trash and sewage (see page 18, 'Sewage and Trash Disposal').

Race organisers are reminded they must advise live-aboard race participants to make use of onshore sanitation facilities whenever possible while vessels are berthed in Bermuda.

The discharge overboard of sewage, or any other pollutant within the 12-mile Bermuda Territorial Limit, is an offence, and offenders will be prosecuted.

3. The Customs Department may impose customs fees/duty on any foreign yacht staying in Bermuda for longer than six months. However, under special circumstances, the Collector of Customs may grant limited extensions beyond the six-month statutory period.

An extension could be granted if the yacht required or was undergoing repairs for weather delays, for injured or sick crew members or, for any other reason that the Collector of Customs considers valid.

NOTE:

The above conditions apply to non-residents of Bermuda only. Specific information regarding the conditions that apply to a person who has been permitted to reside in Bermuda can be obtained from the Collector of Customs.

Answers to any additional or specific questions may be obtained directly from the relevant Government departments or the official Government website www.gov.bm.

ANCHORAGE AND BERTHING FACILITIES

Safe anchorage is available for yachts in both St. George's and Hamilton harbours. Advice may be obtained at any time by radiotelephone through Bermuda Radio/ZBR. Yachts must strictly adhere to berthing instructions on arrival and should not proceed to any berth or anchorage unless directed to do so by Bermuda Radio or the Harbour Master. Boats wishing to shift berth or sail must receive prior clearance as above. Berthing is prohibited in St. George's at Ordnance Island (south side) and Penno's Wharf, except in an emergency, and is chargeable.



Ordnance Island, St. George's

Berthing space is available in St. George's at Ordnance Island (south and north side), Penno's Wharf and Market Wharf, both alongside and Med Moor spots are available. For information and reservations, contact Bermuda Yacht Services Ltd.: www.bdayacht.com, email info@bdayacht.com, Tel (441) 297-2798. For those berthing on the docks, the yacht information centre and crew lounge are located on Ordnance Island with free Wi-Fi for those staying at the town docks.



Tall ship approaching Penno's Wharf, St. George's

Berthing alongside in the central and western end of the Island is restricted to yacht club berths, boat yards and marinas, and is usually chargeable. Charges may be obtained on application from the Dockyard Marina (a full service marina), the Royal Bermuda Yacht Club, the Royal Hamilton Amateur Dinghy Club, The Water Front and others. Berthing for yachts is prohibited at all commercial cargo docks in the City of Hamilton and St. George's, except in an emergency.

For the ultimate mega yacht berth in Bermuda, nothing beats being alongside Front Street in the City of Hamilton. Large yachts over 25 meters are welcome to use the cruise ship berths, subject to shipping schedules. Sewage disposal is available to those vessels able to pump out their holding tanks. Water is available from Bermuda Waterworks, Tel (441) 236-1288, via dockside hydrants. Contact Hamilton Port Operations Office, Tel (441) 295-7724, Fax (441) 295-6824 or email docksoffice@cityhall.bm for schedule of fees and availability of space.

Short-term Dinghy Docking in Hamilton

For visiting yachtsmen that are at anchor in Hamilton Harbour, the western end of Barr's Bay Park is available to tie up their dinghies while running errands in the City of Hamilton area.

FLY IN, SAIL OUT

Visitors entering Bermuda are normally expected to have a return ticket. However, those who wish to fly into Bermuda and depart by yacht should follow this procedure: The captain of the yacht should give a letter to each crew member who will be arriving in Bermuda by air on a one-way ticket and leaving on the vessel. The letter should include the full name, date of birth, address and nationality of each crew member, as well as the name of the vessel he or she will be joining. The Landing Permit fee must be paid on arrival at the airport to an Immigration Officer in either U.S. or Bermuda dollars. Cheques should be made payable to the Accountant General.

If a crew member has bought a round-trip airline ticket, he or the captain of the yacht can contact the Department of Immigration, Tel (441) 295-5151, upon arrival in Bermuda and submit written verification that he or she will be leaving by yacht. The Chief Immigration Officer may then validate the airline ticket so that a refund of the return portion can be obtained from the airline concerned.

It must be emphasised that the above arrangements should be made directly between the captain of the yacht and the Department of Immigration, on behalf of any crew member concerned. Responsibility for the departure of crew members by yacht or air lies with the captain of the yacht concerned.



L.F. Wade International Airport, St. George's

FIREARMS ACT 1973

Under this Act, the importation of any firearm, part of a firearm, or ammunition into Bermuda is forbidden except under the authority of a permit granted by the Commissioner of Police. Such a permit will not ordinarily be granted other than in exceptional circumstances. Spear guns and a variety of dangerous weapons are treated as firearms, as are Verey Pistols and signal guns. No spear fishing whatsoever is permitted within one mile of any shore. Outside the one-mile area, only Hawaiian sling-type devices may be used when free diving.

Spear fishing with SCUBA gear is not permitted. Spear guns may not be used in Bermuda or imported at any time. Nonetheless, it is recognised as normal that most non-commercial vessels entering Bermuda will have on board, at the very least, a Verey Pistol or other signal gun, and perhaps a firearm of some type. Since a permit for such firearms is not likely to be granted, the procedure is that the ship's master or the yacht's captain must declare all firearms and ammunition to the Customs clearance officer as soon as he comes aboard the vessel. Depending on the circumstances, the Customs officer will either remove all such firearms and ammunition and store them ashore, returning them when the vessel leaves, or he may decide to seal the weapons on board in some appropriate place. When the vessel leaves, he will check the seal to ensure it has not been broken. Assuming that a voluntary declaration of firearms possession is made initially and that, if they were sealed on board, the seal is unbroken upon departure, there will be no problems.

NOTE:

Antique weapons manufactured over 100 years ago can be imported into Bermuda with a permit, provided the importer can prove that they are antique and not able to be fired. If in doubt about the provenance of a firearm, it is always best to declare it to Customs anyway. It is a serious criminal offence to import firearms or ammunition into Bermuda without a permit and anyone seeking to do so may be imprisoned or fined heavily, or both.

MISUSE OF DRUGS ACT 1972

Importation of, possession of, or dealing in unlawful drugs are serious offences in Bermuda. Anyone who contravenes the law is liable to fines of up to \$10,000 or five years imprisonment, or both. Conviction on indictment carries a maximum penalty of a fine or imprisonment for life, or both. This includes marijuana and other “soft” drugs as well as “hard” drugs. All medically-prescribed drugs and medications must be declared to the Customs officer on arrival in Bermuda.

MISCELLANEOUS INFORMATION

Boat Yards, Haulage and Slipping Facilities

There are a number of boatyards in Bermuda, some of which also have facilities for slipping yachts of various sizes. Bermuda Radio may be contacted for assistance in making arrangements for emergency repairs. Boatyards with slipping facilities include:

Mills Creek Marine Ltd., Pembroke	t (441) 292-6094
Offshore Yachting & Maintenance, Paget	t (441) 236-9464
Robinson's Marina, Somerset Bridge	t (441) 234-0709
St. George's Boatyard, St. George's	t (441) 297-0877 (large cradle)
West End Yachts Ltd., R.N. Dockyard	t (441) 234-1303 westendyachts@logic.bm

Full shipwright facilities:

Mills Creek Marine Ltd.*, Pembroke	t (441) 292-6094
West End Yachts Ltd., R.N. Dockyard	t (441) 234-1303 westendyachts@logic.bm

*Includes a travel lift for yachts up to 65' in length and a 35-ton lifting capacity. Specialising in spray painting and fibre glass repairs to all fabrics.

Bunkering

There is one bulk supplier of fuel in Bermuda:

Shell Company of Bermuda	t (441) 297-1577
--------------------------	------------------

Its bunkering facility is at Ireland Island, Freeport, at the western end of the Island. This berth has been protected from the weather and is accessible by all vessels. Arrangements can be made with Shell to supply duty free fuel via pipeline (docksides) or by tank truck.

Esso Bermuda can deliver duty free fuel by tank truck to Penno's Wharf, St. George's by prior arrangement with dispatcher, Tel (441) 294-5236.

Smaller quantities of fuel (diesel or petrol) are conveniently available at the following waterfront marinas:

Boaz Island Marine & Services, Sandys	t (441) 234-0128
Dockyard Marina, R.N. Dockyard	t (441) 234-0300
Dowling's Marina, St. George's	t (441) 297-1914 (larger quantities also available)
Van Buren's Marine Station, Flatts Village, Smith's	t (441) 292-2882
The Water Front Shell Station, Pembroke	t (441) 295-3815

Canvas Repairs

Dockyard Canvas Co., Ltd., R.N. Dockyard

t (441) 234-2678 (Includes marine canvas and upholstery)

Ocean Sails Custom Canvas & Upholstery/

Doyle Sailmakers Bermuda, St. George's

t (441) 297-1008

f (441) 297-1008

w www.oceansails.com

e bdasails@ibl.bm or info@oceansail.com

Currency

The legal tender in Bermuda is the Bermuda dollar, which trades equivalent to the U.S. dollar. U.S. currency is accepted at shops, restaurants and hotels at equal (face) value. Other foreign currencies are not accepted, except at local banks where they can be exchanged at rates that are set daily.

Cheque Cashing: Personal cheques drawn on U.S. banks may be cashed at some hotels or local banks by arrangement. The Bermuda Financial Network will cash U.S.\$ cheques for a \$10 + 5% fee at its Hamilton, Somerset and St. George's locations, Tel (441) 292-1799.



Credit Cards: MasterCard, VISA and American Express are accepted at virtually every store, restaurant and hotel, and VISA and MasterCard may be used for cash advances at all local bank branches. In addition, the Bank of Bermuda Limited and Butterfield Bank provide ATMs throughout the Island for MasterCard, VISA, Cirrus and Plus cash advances, most of which are available 24 hours a day. Butterfield Bank also has a number of ATM locations, many of which are also available 24 hours a day. Enquiries about American Express should be directed to the Bermuda Financial Network, Tel (441) 292-1799.

U.S. Traveller's Cheques: Accepted island-wide.

Western Union: The Bermuda Financial Network allows you to send or receive money in minutes via Western Union money transfer services, Tel (441) 292-1799.

Emergency Services in Port

Fire, Ambulance or Police Services can be summoned through Bermuda Radio, or direct by telephoning 911 (no charge).

Engine Repair

Anfossi Marine Ltd, Pembroke

t (441) 534-7269

Powell's Marine Limited, Southside, St. David's

t (441) 297-2244 | e info@powellsmarine.com

w www.powellsmarine.com

KM Marine, Solutions Ltd

t (441) 542-6193

Drive Line Marine

t (441) 534-7124

Bay Imports and Marine Services (Volvo), Southampton

t (441) 238-8211

Harrison Marine Repair (Yanmar), Flatts, Smith's

t (441) 295 1781

Gas Refill

Bermuda Gas & Utility, Serpentine Road, Pembroke

t 441) 295-3111 gas refill - lpg only

Godet & Young Hardware Store, St. George's

t (441) 297-1940 gas refill - lpg only

Sunshine Gas Ltd., City of Hamilton*

t 441) 295-6246 gas refill - lpg only

*Enquire ahead of time as two days' notice may be required

Marinas

Refer to 'Anchorage and Berthing Facilities' (page 14).

Marine Accessories

Captain Smoke's Marina, St. George's	t (441) 297-1940
Dockyard Marina, R.N. Dockyard	t (441) 234-0306
Dowling's Marina, St. George's	t (441) 297-1914
Godet & Young Ltd., St. George's	t (441) 297-1940
The Marine Locker, City of Hamilton	t (441) 295-9950 (Racor fuel representative)
Ocean Sails/Doyle Sailmakers Bermuda, St. George's	t (441) 297-1008 w www.oceansails.com
PWs Marine Centre, Pembroke	t (441) 295-3232 e enquiries@pwmarine.bm
Robinson's Marina, Somerset Bridge	t (441) 234-0709
Triangle Rigging, St. George's	t (441) 297-2155 or (441) 336-8500
West End Yachts, R.N. Dockyard	t (441) 234-1303 e westendyachts@logic.bm

Marine Departure Weather

The Bermuda Yacht Reporting Centre, located on Ordnance Island, St. George's, provides the following amenities to local and visiting yachtsmen, 0800 - 2300 daily:

1. A display of the latest Bermuda Weather Service North Atlantic Weather Forecast charts (up to four days ahead), tropical warnings and advisories and Gulf Stream analysis are on display and can be copied upon request.
2. By calling 293-5067 ext. 402, yachtsmen can book pre-sail weather briefings from the meteorologist at the Bermuda Weather Service (BWS), which will normally be scheduled with the regular week day morning weather briefings at 9:30 a.m. In order to fit with their routine work schedule, all weather briefings from BWS should be booked at least 6 hours in advance, or dial the recorded marine weather forecast and warning numbers (9772 and 9773); BWS also offers the service of telephone briefings and mariners can call in en route. The mariner may wish to call initially to give their location and destination and then call back in a time designated by the duty forecaster in order to save on phone fees.

The Bermuda Weather Service has a home page on the Internet, **www.weather.bm**, with detailed marine forecasts, 5-day Marine Forecast Charts for the Western-Mid Atlantic region, weather radar and local automatic weather station reports. Local weather information is also broadcast on Cable TV Channel 4 and WOW TV Channel 101.

Bermuda Radio also transmits local weather information throughout the day on Marine VHF Weather Channel 2. Offshore Waters and High Seas Forecasts are available on request. See the section on 'Communications' for further details.

Marine Electrics

For sales and service of alternators, starters and electrical systems:

D.C. Electronics, 54 Spanish Point Road, Pembroke	t (441) 292-8566 or (441) 747-0911
Anfossi Marine Ltd., 17 Mill Creek Road, Pembroke	t (441) 292-8001
	c (441) 534-7269
	f (441) 292-8072
	e anfossimarineltd@ibl.bm

Marine Electronics

For the sale and service of electronic equipment such as VHF, GPS, EPIRB and other marine instruments and auto pilots:

Ocean Electronics (Raymarine certified dealer)	t (441) 297-1008 or (441) 704-0102
	e electronics@oceansails.com

Ocean Sails/Doyle Sailmakers Bermuda

t (441) 297-1008
f (441) 297-8330
w www.oceansails.com
e bdasails@ibl.bm or info@oceansail.com

Mariner's Club

Richmond Road, City of Hamilton

t (441) 295-5598
f (441) 292-1519
e bermudasailorshome@logic.bm
w www.bermudayp.com

Provides facilities for naval personnel, merchant navy and other mariners. A small seamen's chapel is available.

Medical and Dental Facilities

For emergency services at sea or in harbour, all requests should be channelled through Bermuda Radio—medical assistance will be sent if required.

For medical services while in Bermuda, in particular emergencies, go to the Emergency Department of the King Edward VII Memorial Hospital in Paget East, Tel (441) 236-2345. Telephone 911 for ambulance service if required.

Advice on dental assistance may also be obtained through the King Edward VII Memorial Hospital.

For minor injuries and illnesses only, in the east end of the Island there is the Lamb Fogo Urgent Care Centre located on Southside, St. David's Island (St. George's Parish), Tel (441) 298-7700. Opening hours: weekdays from 4:00pm to midnight; weekends from midday to midnight.

Ocean Yacht Races to and from Bermuda

Several international races take place every May, June and July. Skippers of privately-owned vessels not participating in a race, who wish to come to Bermuda during these times, should make arrangements well in advance for berthing and other facilities.

In addition, two other active times of the year for international races held within Bermuda are April and October.

Rigging, Sail Makers and Repairs

Ocean Sails/Doyle Sailmakers Bermuda

60 Water Street, St. George's

t (441) 297-1008
f (441) 297-8330
w www.oceansails.com
e bdasails@ibl.bm or info@oceansail.com

This is Bermuda's only full-service sail loft, custom canvas and upholstery, rigging, ocean electronics, hardware shop. WiFi to the harbour plus Internet, fax services and phone cards available.

Triangle Rigging

22 Wellington Slip Road, St. George's

(rigging shop, marine repairs, ocean accessories)

t (441) 297-2155 or (441) 536-8500
w www.rigging.bm
e rigging@northrock.bm

Sewage and Trash Disposal

All yachts should be fitted with either holding tanks to contain sewage for discharge in waters outside the outer reef edge or have U.S. Coast Guard-approved marine sanitation devices aboard (Type 1 or 2, in accordance with current U.S. Coast Guard requirements). However, wherever possible, onshore sanitation facilities should be utilized. The discharge overboard of sewage, or any other pollutant within the 12 mile Bermuda Territorial Limit, is an offence, and offenders will be prosecuted.

Arrangements for trash pickup may be made through: Mr. Courtney Trott at the Corporation of St. George, Tel (441) 297-1532 or email ctrott@stgeorge.bm; or through the marina or club where the vessel is berthed.



Ship's Chandlers

There are no ship's chandlers in the true sense in Bermuda. However, there is a sail loft company, see 'Sail Makers and Repairs', and, see also 'Marine Accessories' for a listing of a number of companies that specialise in marine essentials. Supermarkets located throughout Bermuda that are best suited to supplying yachts are:

A-1 Supermarket, Paget	t (441) 236-0351
A-1 Supermarket, Smith's	t (441) 236-8763
Arnold's Family Market, Pembroke	t (441) 292-3310
Lindo's Family Foods, Warwick	t (441) 236-1344
Lindo's Market, Devonshire	t (441) 236-5623
MarketPlace Supermarkets	t (441) 292-3163
Miles Market, Pembroke	t (441) 295-1234
Somers Supermart, St. George's	t (441) 297-1177
Supermart, City of Hamilton	t (441) 292-2064

Steel Fabrication

MASS Ltd., Wellington Slip Road, St. George's	t (441) 297-8078 c (441) 334-8979
	e sgby@logic.bm
	w www.stgeorgesboatyard.bm

UHT or Long Life Milk and Soya Milk

Ultra Heat Treated (UHT) or Long Life Milk may be purchased at Somers Supermart—note that sales can only be made when the product is purchased in case lots for export. Soya milk (variety of brand names) is available in all grocery outlets.

Visitors' Information

Bermuda Yacht Services:

An information centre for visiting yachtsmen. Open all year, but the operating hours cater to the needs of the visiting yachts. Tel (441) 297-2798, email info@bdayacht.com or www.bdayacht.com.

Visitor Information Centres (VIC):

King's Square, Town of St. George

Front Street, City of Hamilton

Royal Naval Dockyard

The VICs provide all types of general information on Bermuda and assistance to all visitors upon request. Each VIC is open weekdays and on either Saturdays or Sundays (hours and days are curtailed during the November through March months).

Water

Supplies of fresh water may be obtained at dockside from water truckers (consult the Yellow Pages of the Bermuda Telephone Directory), or through the club or marina where berthed. If bunkering at Esso or Shell installations, fresh water may be obtained at the same time.

Yacht Agents

Yacht agents are available to assist with entry formalities, provisioning, transportation, dockage and many other needs.

Bermuda Yacht Services Ltd.

t (441) 297-2798

e info@bdayacht.com

w www.bdayacht.com

Bermuda Ship Agencies Ltd.

t (441) 294-1401

e agents@bermudaports.com

w www.bermudaports.com

Meyer Shipping

t (441) 296-9798

e shipping@meyer.bm

w www.meyer.bm

Yacht Mooring Rentals

For year-round short and long term rentals:

Bermuda Yacht Services Ltd.

t (441) 297-2798

e info@bdayacht.com

w www.bdayacht.com



APPROACH LIGHTS TO BERMUDA (FROM SEAWARD)

All position information provided is referenced to WGS 84 datum, with latitudes and longitudes provided deriving from British Admiralty Hydrographic Office charts. It is advisable to check with Bermuda Radio before transiting all channels for the latest navigational warnings. All information supplied by Marine & Ports Services.

Name and Position	Character	Remarks
North Rock Beacon 32° 28.5'N 64° 46.1'W	Group flash white (4) every 20 seconds yellow	70 ft. G.R.P. tower. Black over (North Cardinal mark). Radar reflector. The words NORTH ROCK in white letters on a black background near the top of the tower. Visible for 12 miles.
North East Breaker Beacon 32° 28.7'N 64° 41.0'W	Flash white every 2 1/2 seconds	Red G.R.P. tower on a red concrete tripod base. Height 45 ft. The word NORTHEAST in red letters on a white background at the base of the tower. Radar reflector RACON 'N'. Visible for 12 miles.
Kitchen Shoal Beacon 32° 26.1'N 64° 37.6'W	Group flash white (3) every 15 seconds	Red and white horizontally striped G.R.P. tower on a concrete tripod (Eastern Cardinal Mark). Height 45 ft. The word KITCHEN in red letters on a white background at the base of the tower. Radar reflector. Visible for 12 miles.
Eastern Blue Cut Beacon 32° 23.9'N 64° 52.6'W	White flashing Morse "U" (.-.) every 10 seconds	Black and white horizontally striped G.R.P. tower on a black concrete tripod with EASTERN BLUE CUT in black letters on a white central band. Radar reflector. Height 60 ft. Visible for 12 miles.
Chub Heads Beacon 32° 17.2'N 64° 58.9'W	Very quick flash white (9) every 15 seconds	Yellow and black horizontally striped G.R.P. tower (Western Cardinal Mark) on a black concrete tripod with CHUB HEADS in white letters on a black central band. Radar reflector Racon 'C'. Height 60 ft. Visible for 12 miles.

Mills Breaker Buoy
32° 23.9'N 64° 36.9'W

Very quick flash white (3)
every 5 seconds

Eastern Cardinal Mark. Coloured black with a single broad horizontal yellow band. Topmark - two black cones, one above the other, base to base. The word MILLS in black on a yellow background.

Spit Buoy
32° 22.7'N 64° 38.5'W

Quick flash white (3)
every 10 seconds

Eastern Cardinal Mark. Coloured black with a single broad horizontal yellow band. Topmark - two black cones, one above the other, base to base. The word SPIT in black on a yellow background.

Sea Buoy
32° 22.9'N 64° 37.1'W

Morse 'A' (-.) every 6 seconds

Pillar buoy is a safe water mark with red and white vertical stripes with the letters 'S.B.' in white on the side. It has a red ball top mark.

St. David's Island Lighthouse
32° 21.8'N 64° 39.1'W

Fixed red and green sectored light below a group flashing white (2) every 20 seconds.

Red Sector: 135°T-221°T
276°T-044°T
044°T-135°T

Green Sector: 221°T-276°T
(bearings from seaward)

Height 212 ft. Range - red and green sectors 20 miles. White flashing light 15 miles. Between 044°T-135°T both lights partially obscured by land.

Kindley Field Aero Beacon
32° 21.95'N 64° 40.55'W

Alternating white and green 1 white, 1 green.
(Rotating Aero Beacon)

Height 140 ft. (Light/loom). Visible 15 miles.

Gibbs' Hill Lighthouse
32° 15.2'N 64° 50.1'W

Revolving white flash every 10 secs.

Height 354 ft.
Visible 26 miles.



LIGHTED BUOYS, BEACONS, SHIP'S CHANNELS

Name and Position	Character	Remarks
No. 1 Buoy - red	Fl. red every 2 1/2 secs.	
No. 2 Buoy - green	Fl. green every 2 1/2 secs.	
No. 8 Beacon - green	Fl. green every 4 secs.	
No. 10 Beacon - green	Fl. green every 4 secs.	
No. 11 Buoy - red	Fl. red every 4 secs.	
No. 14 Buoy - green	Fl. green every 2.5 secs.	
No. 15 Buoy - red	Fl. red every 4 secs.	
No. 16 Buoy - green	Group fl. (2) green every 7 1/2 secs.	
No. 20 Beacon - green	Fl. green every 2 1/2 secs.	
No. 21 Buoy - red	Fl. red every 2 1/2 secs.	To be replaced with a Beacon.
No. 22 Beacon - green	Fl. green every 4 secs.	
No. 26 Beacon - green	Fl. green every 2 1/2 secs.	
Elbow Buoy	V. quick fl. white (6) plus one long every 10 secs.	South Cardinal Mark. Yellow/Black Pillar buoy with the word ELBOW, two cones, points down.
No. 29 Beacon - red	Fl. red every 4 secs.	
No. 30 Beacon - green	Fl. green every 4 secs.	
No. 33 Buoy - red	Fl. red every 2 1/2 secs.	
No. 35 Beacon - red	Fl. red every 4 secs.	
No. 38 Buoy - green	Fl. green every 2 1/2 secs.	
No. 40 Buoy	V. quick fl. white (9) every 15 secs.	Western Cardinal Mark. Colour yellow with a broad black band. Topmark two black cones, one above the other, point to point.
No. 42 Buoy - green	Fl. green every 4 secs.	
No. 44 Buoy - green	Fl. green every 2.5 secs.	
No. 99 Buoy - red	Fl. red every 2 1/2 secs.	
No. 102 Buoy - green	Fl. green every 4 secs.	
No. 103 Buoy - red	Fl. red every 4 secs.	

SHORE LIGHTS, BEACONS**Town Cut, St. George's**

Higgs' Island	Fixed green	NE corner of Higgs' Island.
Horseshoe Island	Fixed green	W corner of Horseshoe Island.
Gates Fort	Fixed red	NE side of Town Cut Channel.
Chalk Wharf	Fixed red	NW side of Town Cut Channel.
Three Sisters' Shoal Beacon	Very quick fl. green (80 p/min)	St. George's Harbour between Horseshoe Island and Hen Island.
Hen Island Beacon	Flash green every 1 1/2 secs. (40 p/min)	NW corner of Hen Island.
Swing Bridge	Two fixed red lights	Ferry Reach.
Narrows, St. David's	Fixed green light	South side of Smith's Island.

St. Catherine's Point to Spanish Point

Shelly Bay Shoal Beacon	Group fl. (2) white every 7 1/2 secs.	Black beacon with one broad horizontal red band. Topmark - two black spheres, one above the other.
Gibbet Island	Fl. red every 4 secs.	Isolated Danger Mark west side of island.
Devonshire Dock	Fixed green light	
Hogfish Beacon	Group fl. (2) orange every 10 secs.	White structure with black band around the top. Height 20 ft.
Flatts Bridge	Traffic lights red and green	Both sides of the bridge.

Great Sound, Morgan's Point, Freeport

Pearl Island	Fl. orange every 4 secs.	
Dagger Rocks	Fl. red every 4 secs.	
Riddell's Bay	Fl. green every 4 secs.	
Ricketts' Island	Fl. red every 2 1/2 secs.	
Watford Bridge	Two fixed red lights each side	Marking the central span.
Somerset Bridge	Traffic lights red and green	Both sides of bridge.
Commodore's Cottage	One fixed red light	Dockyard
South Breakwater	Fl. green every 4 secs.	Dockyard
North Breakwater	Fl. red every 4 secs.	Dockyard
KP1 Buoy	Group flash (3) white every 10 secs.	King's Point (Eastern Cardinal Mark).

Long Point Beacon	V. Quick fl. white (3) every 5 secs.	End of Long Point (Eastern Cardinal Mark).
Cavello Bay Beacon	Fl. red every 2.5 secs	Cavello Bay ferry stop.

Hamilton

Two Rock Passage (North)	Very quick fl. green light (80 p/min)	North side of entrance.
Two Rock Passage (South)	Very quick fl. red light (80 p/min)	South side of entrance.
Head of the Lane	Fl. white every 4 secs.	
Timlin's Narrows	Fl. red every 2 1/2 secs.	South side of channel.
Spectacle Island Beacon	Fl. green every 4 secs.	South end of the island.

Granaway Deep

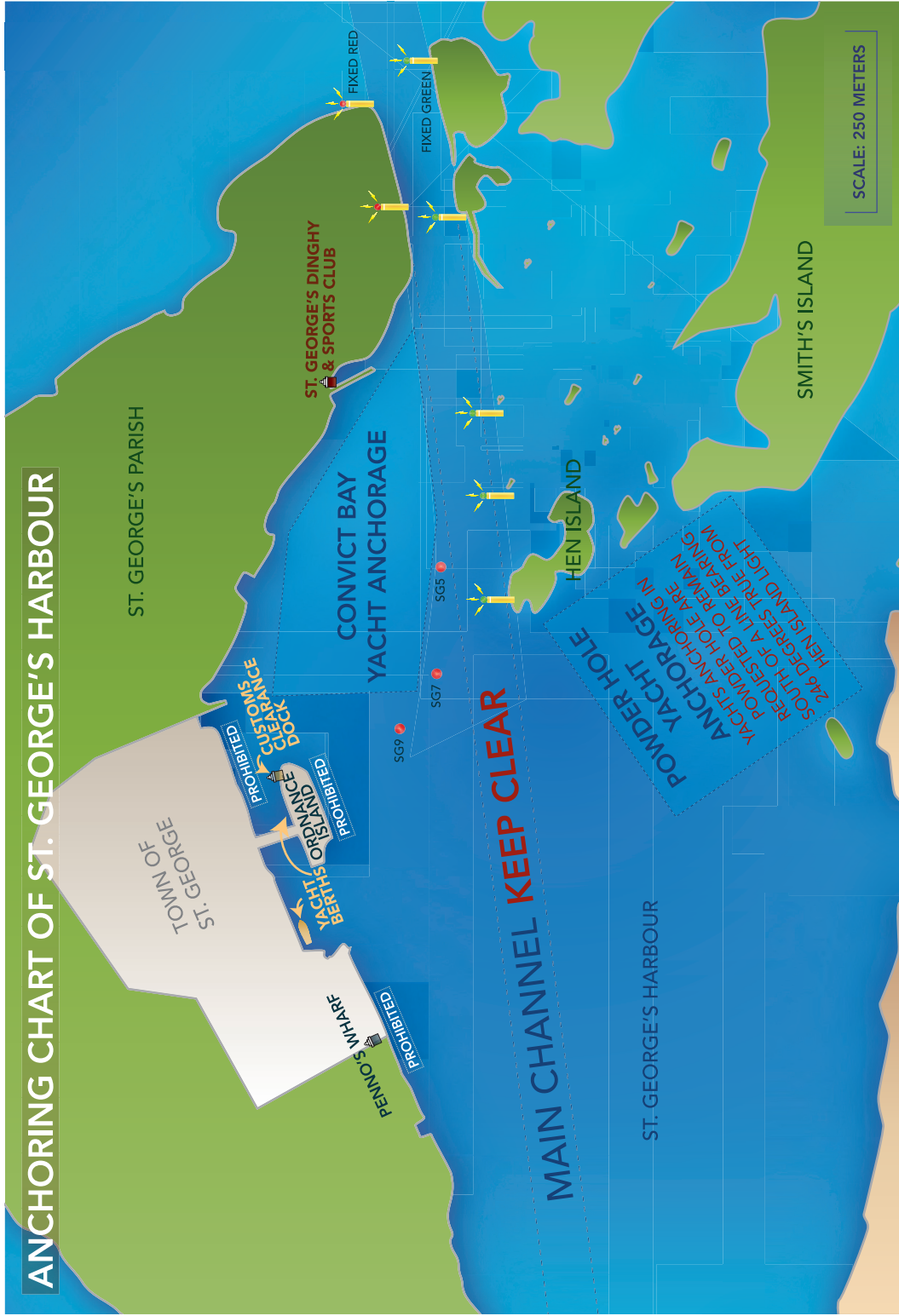
Irresistible Island Beacon	Fl. green every 4 secs.	South side of the island.
Granaway Buoy	Morse "A" (._) every 8 secs.	Pillar Buoy, red/white vertical stripes, red ball topmark (safe water mark), letter 'G' in white on the side.

Western (Hogfish) Channel

Pompano Beacon	Very quick fl. green light (80 p/min)	Turning mark for entrance into Hogfish Channel.
Hogfish Tripod	Fl. green every 4 secs.	
Hogfish Cut Beacon	Fl. red every 4 secs.	
Wreck Hill Beacon	Very quick fl. red light (80 p/min)	



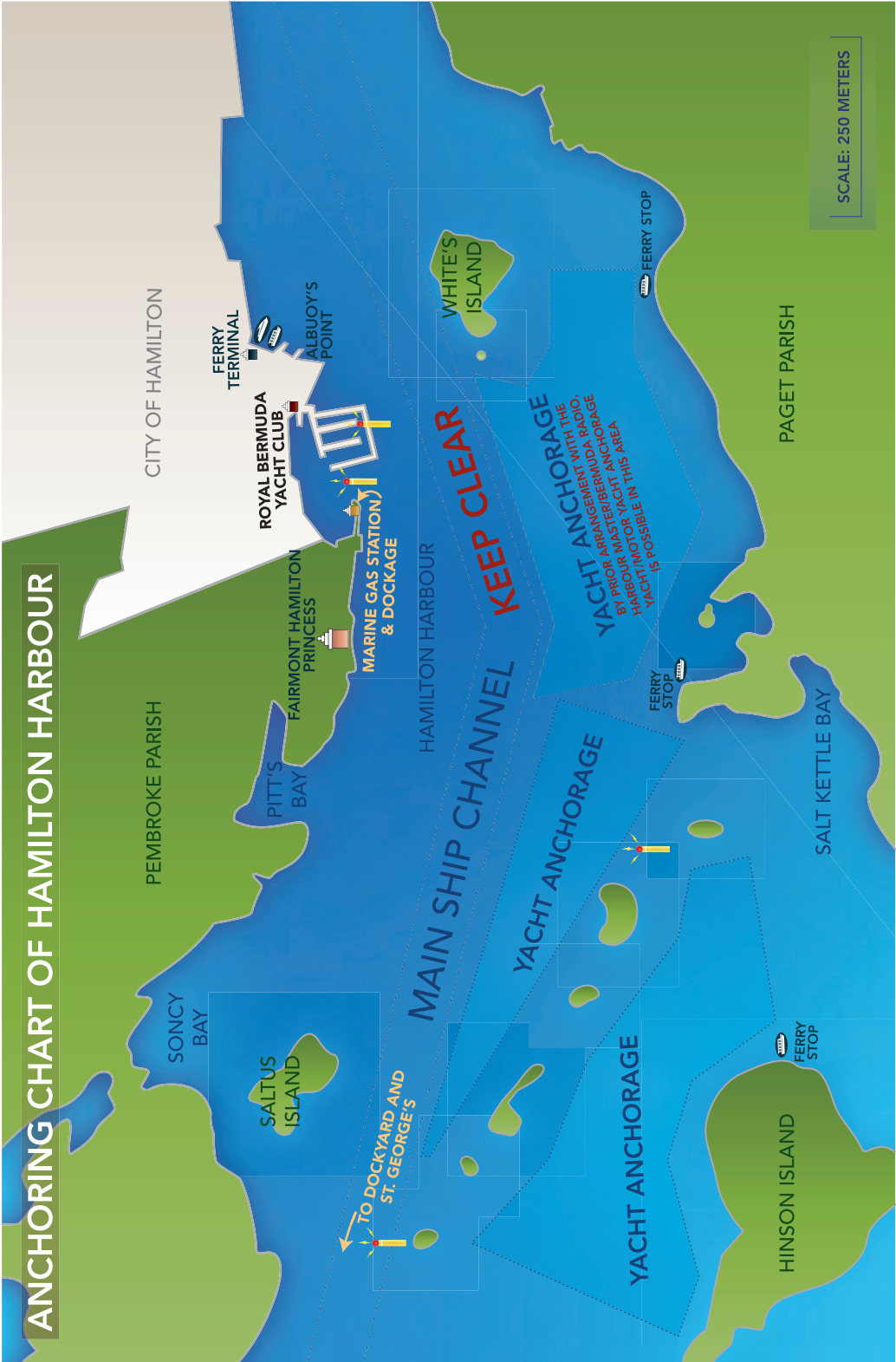
Map data supplied by the Department of Land Surveys and Registration and the Ministry of Planning and Environment.



Yachts are requested to contact Bermuda Radio before anchoring.

NOT TO BE USED FOR NAVIGATION.

Map data supplied by the Department of Land Surveys and Registration and the Ministry of Planning and Environment.



Yachts are requested to contact Bermuda Radio before anchoring.

NOT TO BE USED FOR NAVIGATION.

Bermuda Tourism Authority

22 Church Street
Hamilton HM 11, Bermuda
Tel: 296 9200

North America

Tel: 1 212 818 9800 or 1 800 223 6106
E-mail: travel@bermudatourism.com

For more information, additional brochures or to book a Bermuda vacation call or visit

1.800.bermuda (Monday – Friday, 9:00 a.m. – 5:00 p.m. EST)
GoToBermuda.com

BERMUDA
so much more®

Information contained in this brochure was compiled by the Bermuda Tourism Authority, with the assistance of Bermuda Radio and the departments of Immigration, Customs, Environmental Health and Environmental Protection and was correct at the time of revision, June 2013, produced June 2014. Please note that all fees and conditions contained within is subject to change without notice.

Information and images contained within this brochure may not be reproduced in any form without the permission of the Bermuda Tourism Authority, Creative Services Office, Creative Services Office, 22 Church Street, Hamilton HM 11. Reproduction by any method for financial gain is strictly prohibited.

BDOT/J05632/6.14 Produced in Bermuda. Printed in the US.